

# ACCO E6



**THE NEXT GENERATION ACCO**



# IVECO

Your partner for sustainable transport



# ACCO

## INTRODUCING THE ALL NEW EURO 6 ACCO

The ACCO is a transport industry icon in New Zealand and Australia, and this all-new version is designed to deliver all of the toughness and functionality of its predecessor while bringing never before seen levels of safety equipment and driver comfort levels to the ACCO nameplate.

Development of the E6 ACCO featured close collaboration between IVECO's European headquarters and New Zealand and Australian engineering teams. Several evaluation vehicles also underwent yearlong local trials with key refuse customers, where they performed extremely well in benchmark testing.

- ✓ **POWER WITH EFFICIENCY AND LESS ENVIRONMENTAL IMPACT**
- ✓ **RUGGED TRANSMISSION**
- ✓ **MARKET-LEADING SAFETY**
- ✓ **LOW COST OF OWNERSHIP**
- ✓ **SUPERIOR COMFORT**



# E6

**IVECO**  
Your partner for sustainable transport





## HIGH EFFICIENCY EURO6 ENGINES

The new E6 ACCO is available with two Cursor 9 engine options that are more powerful and produce fewer harmful emissions than their predecessors.



E6

## ACCO – MADE FOR THE TOUGHEST JOBS

Initially the new E6 ACCO models are targeted specifically at vocational markets, particularly for compactor, hooklift bin and concrete applications which were a mainstay of the previous generation ACCO. Additional models for other applications will gradually be added to the range in the coming months.

Currently models include:

- 6x4 single control
- 6x4 factory dual control
- 8x4 single control

The 6x4 variants both feature a 25 tonne GVM and a choice of four wheelbases, while the 8x4 receives a 28.5 tonne GVM and three wheelbase options.



### CURS0R 9

8.7 litres developing 310hp at between 1700 and 2200 rpm and 1300 Nm between 1100 and 1700 rpm.

### CURS0R 9 HIGH OUTPUT

8.7 litres developing 360hp at between 1600 and 2200 rpm and 1650 Nm at between 1200 and 1530 rpm.

### MORE EFFICIENT ENGINE INTERNALS

The latest Cursor 9 engines includes new rings and re-profiled pistons with lower tangential load to reduce engine friction without increasing engine oil consumption.

The Engine structures such as the cylinder head, block, pistons, connecting rods and crankshafts have also been revised to allow higher peak cylinder pressures.





# PATENTED NEW HI-eSCR AFTER-TREATMENT SYSTEM

HI-eSCR

Hi-eSCR is a single after-treatment system featuring a passive DPF (Diesel Particulate Filter) meaning regeneration does not require driver intervention. The technology is uncomplicated and efficient, providing many advantages compared to EGR and SCR equivalents, including reduced fuel consumption, a lower tare weight and less stress on the engine because it's not exposed to the high engine temperatures that are required during a manual regeneration.

### HI-eSCR benefits

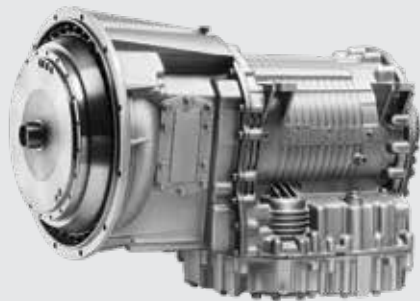
- Meets stringent Euro6 emissions standards without EGR
- The best selective catalytic reduction system available
- Efficient yet uncomplicated technology
- Provides 50% reduction in Particulate Matter compared with Euro5
- Provides 80% reduction in NOx compared with Euro5
- Reduced fuel consumption
- Reduced engine temperatures compared to manual regeneration systems

HI-SCR BENEFITS	
80% REDUCTION IN NOX	✓
50% REDUCTION IN PARTICULATE MATTER	✓
LARGE REDUCTION IN HYDROCARBON EMISSIONS	✓
NO ACTIVE REGENERATION	✓
NO IMPACT ON COOLING SYSTEM	✓
LONG SERVICE INTERVALS	✓
IMPROVED COMBUSTION EFFICIENCY	✓
IMPROVED FUEL ECONOMY	✓



# PROVEN TRANSMISSION

Feeding power to the wheels in the new E6 ACCO is the Allison Generation Five 3200 Series, 6-speed full automatic transmission which is a proven performer particularly in stop and start running as experienced in urban and metro waste collection as well as concrete agitator work. A Chelsea/Parker PTO is standard – a favourite for waste collection work – and hydraulic retarder option are also available.



# FUEL SAVINGS

There'll be plenty of fuel in the tank to get you back to base with the ACCO's fuel saving technologies which include:

ECOSWITCH	Sets speed limiter for the vehicle to automatically adjust engine torque depending on the load.
GAP SETTING	Allows for minor variances versus the set cruise control speed, so the truck works within these broader parameters to make better use of the vehicle's inertia and momentum.
ENGINE ANTI-IDLING	Automatically cuts engine after five minutes of continuous idling (feature can be turned on/off).
DRIVER STYLE EVALUATION (DSE)	Part of the IVECONNECT multimedia system, DSE provides real-time driver evaluation and feedback on how to drive more efficiently, saving money at the bowser. Not available on 6x4 dual control model



# SAFER THAN EVER

The new ACCO range benefits from many impressive safety features to protect the driver and other road users, positioning IVECO as an industry leader in safety. Along with the more widely available safety equipment such as ABS brakes, Electronic Stability Program and Hill Holder, the ACCO takes safety to a whole new level. Other safety features include:

**ELECTRONIC BRAKING SYSTEM (EBS)  
WITH BRAKE ASSISTANCE SYSTEM (BAS)**

Increases the required brake pressure to engage ABS if the driver doesn't press the brake hard enough.

**ADAPTIVE CRUISE CONTROL (ACC)**

Automatically adjust the truck's speed to keep a safe distance to the vehicle in front.

**ADVANCED EMERGENCY BRAKING  
SYSTEM (AEBS)**

Measures distance to the vehicle in front and applies the brakes in various stages if the driver does not react.

**ECAS**

IVECO 8-bag Electronically-Controlled Air Suspension (ECAS) to control ride height.

**AXLE LOAD INDICATOR**

For economical and convenient supervision of axle loads

**OPTIONAL HYDRAULIC RETARDER**

Uses drag forces to help reduce the truck's speed and compliments the main braking systems.

**OPTIONAL XENON HEADLAMPS**

These lights emit a brighter white light for added visibility. (Not available on dual control models).

**VENTILATED DISC BRAKES FRONT & REAR**

**OPTIONAL LANE DEPARTURE WARNING  
SYSTEM (LDWS)**

System recognises road markings and sounds an audible warning if the truck moves from its lane (without indicators engaged).

**OPTIONAL TYRE PRESSURE  
MONITORING SYSTEM (TPMS)**

Automatically monitors pressures via wheel-mounted modules that wirelessly transmit details to the instrument cluster, alerting of any issues.

**OPTIONAL DRIVER ATTENTION SUPPORT (DAS)**

Checks driver's attention by analysing steering wheel movements, if drowsiness is detected an audible prompt is given and on screen message prompts driver to stop and rest (Not available on dual control models).

# A CABIN LIKE NO OTHER ACCO

The latest ACCO cabin provides major enhancements in terms of driver appointments, comfort, quietness and visibility.



**FINGERTIP CONVENIENCE**

For a convenient and enjoyable drive, ACCO can include Automatic Climate Control, the IVECONNECT\* multimedia system with satellite navigation, new instrument cluster and a redesigned steering wheel with integrated quick menu controls. The interior also features extensive storage areas throughout the cabin – there's also a new central locking system with 'check light' function.

\*Not available on dual control models.

**NO WAITING WITH FACTORY DUAL CONTROL**

The latest ACCO range with its factory-fitted dual control system, means there's no long wait at the bodybuilder to bring the truck up to requirements for compactor work.

Manufactured in house also ensures that the ACCO dual control system meets IVECO's high standards and complete vehicle integration born during the truck's research and design process.

**REDUCING YOUR TOTAL COST OF OWNERSHIP**

Individual parts such as the 3 piece bumper can also be changed to reduce costs of replacing the entire bumper bar assembly.





# FORM AND FUNCTION WITH ACCO ACCESSORIES

Using IVECO accessories, owners can customise their vehicle to further increase its great looks and functionality, both inside and outside of the cabin.

## EXTERNAL

- 1. Styling kit:** Comprised stainless steel-look ABS plastic mirror covers, chromed stainless steel door handles with IVECO logo, chromed stainless steel side vent trims and chromed stainless steel 'U-shaped' upper grill trim.
- 2. Weathershield kit:** Reduces sun glare at the top of the windscreen while increasing visual presence – it features tough, hardwearing plastic construction that is contoured to suit the shape of the cabin.
- 3. Chromed logo and trims:** To enhance the look of the rear, IVECO offers chromed stainless steel logo trim and four trim pieces that provide a cascading affect below the logo.
- 4. Toolbox:** Operators wanting an additional external storage can specify IVECO's flower-embossed, stainless steel toolbox. With generous dimensions of 800 x 500 x 500mm, it offers plenty of extra space.

## INTERNAL

- 5. Canvas Seat Covers:** Designed to provide an exact fit for ACCO seats, these covers are crafted from high quality canvas fabric to provide both comfort and protection. The covers feature foam backing for added comfort, are water resistant and even flame retardant.
- 6. Sheepskin Seat Covers:** The sheepskin line of seat covers offer the ultimate in luxury and comfort. The covers feature high density wool pile that better keep their shape and form, and are also easy-to-fit.
- 7. Door courtesy light:** The L.E.D door courtesy light not only looks good projecting an illuminated IVECO logo towards the ground when the door is opened at night, but also provides added safety ensuring the driver steps onto a level surface free of obstructions when leaving the cabin in poorly lit areas.

# SERVICE, WARRANTY AND MAINTENANCE

Every driver and transport business knows how important it is to be able to rely on a service support network that takes care of their investment.

For a lower total cost of ownership, ACCO models benefit from generous service intervals of up to 50,000 kilometres / 1000 engine hours (may vary depending on application).

To ensure peace of mind, ACCO models are covered by IVECO's comprehensive warranty and support services, including a 24 month / 500,000 kilometre standard warranty. Extended warranties of up to 5 year / 500,000 kilometres are also available at extra cost. All work undertaken use IVECO Genuine Parts which are covered by a 2 year warranty.

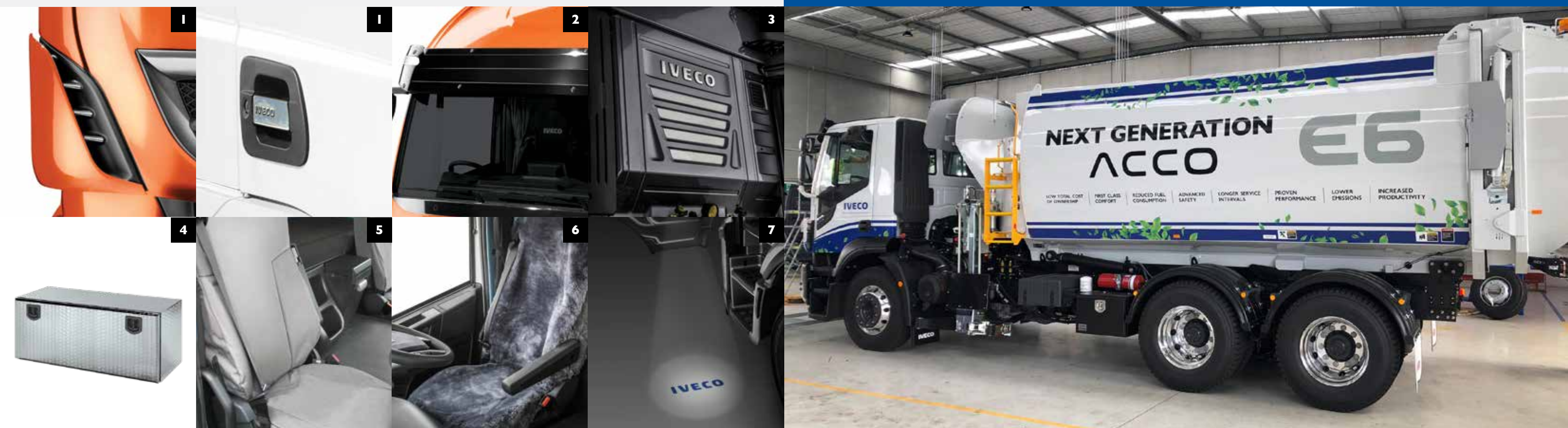
The range is backed by an extensive dealer support network of 24 outlets nation-wide as well as 24/7 Roadside Assistance for the duration of the warranty period.

## FINANCE

IVECO can also assist buyers in sourcing competitive finance options for the purchase of their new ACCO.

## DEALER NETWORK

IVECO has 24 locations throughout New Zealand each offering professional technicians backed by world class training, providing total support and assistance in every situation. By placing your trust in authorised IVECO Service locations, you also have the guarantee of genuine 100 percent IVECO replacement parts, ensuring the performance and integrity of your vehicle is maintained at all times. Phone 0800 FOR IVECO (0800 367 48326)





# DEALER NETWORK

Every driver and transport business knows how important it is to be able to rely on a service support network that takes care of their investment with speed and professionalism. IVECO has 24 locations throughout New Zealand each offering professional technicians backed by world class training, providing total support and assistance in every situation. By placing your trust in authorised IVECO Service locations, you also have the guarantee of genuine 100 percent IVECO replacement parts, ensuring the performance and integrity of your vehicle is maintained at all times. Phone 0800 FOR IVECO (0800 367 48326)

## NORTH ISLAND

1. **BELL BLOCK SERVICE CENTRE\***  
134 Connett Road,  
East New Plymouth
2. **COMMERCIAL DIESEL LTD\***  
40 Gumdigger Place, Whangarei
3. **DIESEL SOLUTIONS LTD\***  
59 Aviation Avenue,  
Mt Maunganui
4. **DUDLEY MECHANICAL  
AND PARTS LTD\***  
24 Manuka Street, Taupo
5. **EMMETTS TRUCK SERVICES\***  
799 Tremaine Avenue,  
Palmerston North
6. **EMMETTS TRUCK SERVICES\***  
351 Heads Road, Wanganui
7. **HYDRADIESEL ENGINEERING\***  
75 Port Road, Seaview, Lower Hutt
8. **IVECO NEW ZEALAND**  
1 Jerry Green Street, Wiri, Auckland
9. **JIM YOUNG MOTORS\***  
590 Main Road, Bay View, Napier
10. **PRESTIGE  
INTERNATIONAL LTD\***  
21 Vogler Drive, Wiri
11. **TIDD ROSS TODD LTD\***  
59A Ash Road, Auckland
12. **TIDD ROSS TODD LTD\***  
48 Maui Street, Pukete, Hamilton
13. **TOTAL PARTS &  
SERVICES LTD\***  
34 Banks Street, Gisborne
14. **WAIKATO IVECO\***  
38 Bryan Road, Hamilton

## SOUTH ISLAND

1. **ADVANCEQUIP NZ\***  
1A Hyde Street, Gore
2. **ASHBURTON IMPLEMENT  
SERVICES LTD\***  
22 Robinson Road, Ashburton
3. **DIESEL TRANSPORT SERVICES\***  
53 Main Road, Dunedin
4. **LLOYD HESLOP  
MOTORS LTD\***  
7-11 Kotua Place, Nelson
5. **NEW ZEALAND TRUCKS LTD\***  
6 Brydone Road,  
Hornby South, Christchurch
6. **SOUTHERN  
MECHANICAL SERVICES\***  
33 Bay Road, Invercargill
7. **STAR TRUCKS  
INTERNATIONAL LTD\***  
8/14 Stratford Street, Richmond
8. **TIDD ROSS TODD LTD\***  
6 Brydone Road, Hornby South,  
Christchurch
9. **VENT MECHANICAL REPAIRS\***  
3535 State Highway 1 Riverlands,  
Blenheim
10. **WAITAKI HEAVY  
VEHICLE MAINTENANCE\***  
Main North Road, Oamaru

# SALES  
\* PARTS | SALES | SERVICE  
^ PARTS | SERVICE  
~ PARTS  
- SERVICE

Phone 0800 FOR IVECO (0800 367 48326)

**IVECO ASSIST 0800 367 483**

[www.iveco.co.nz](http://www.iveco.co.nz)

**IVECO**  
Your partner for sustainable transport

IVECO TRUCKS NEW ZEALAND N.Z.B.N. 9429 038 904 172 | JERRY GREEN STREET, WIRI, AUCKLAND 2104, NEW ZEALAND TELEPHONE (09) 277 2070 WWW.IVECO.CO.NZ TERMS AND CONDITIONS OF SUPPLY AND WARRANTY APPLY. THE INFORMATION IN THIS DOCUMENT WAS CORRECT AT THE TIME OF PRINTING. ALL WEIGHTS AND MEASUREMENTS ARE APPROXIMATE ONLY. IMAGES IN THIS DOCUMENT MAY SHOW EQUIPMENT NOT INCLUDED IN THE STANDARD VEHICLE. WE RESERVE THE RIGHT TO AMEND ANY PART OF THIS DOCUMENT WITHOUT NOTICE. IVECNZ1013 03/20